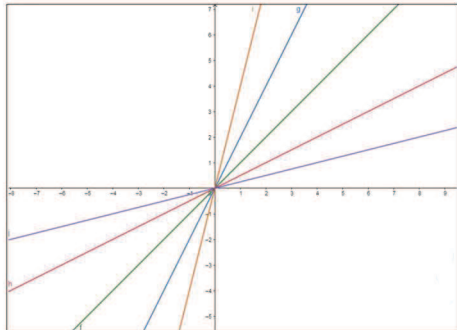


# STRAIGHT LINES: Standard form

9026 Watch video and complete examples

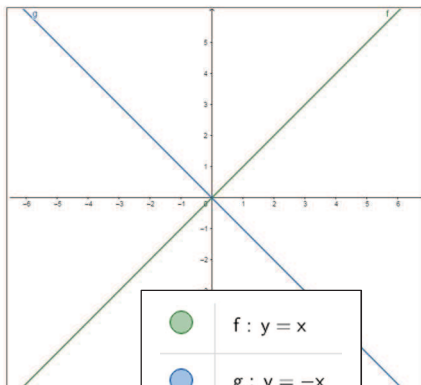
Effect of gradient ( $m$ ):



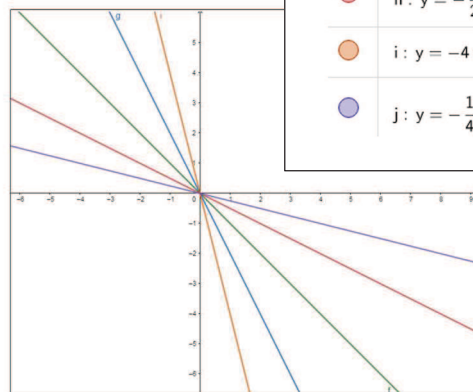
	f: $y = x$
	g: $y = 2x$
	h: $y = \frac{1}{2}x$
	i: $y = 4x$
	j: $y = \frac{1}{4}x$

$$y = mx + c$$

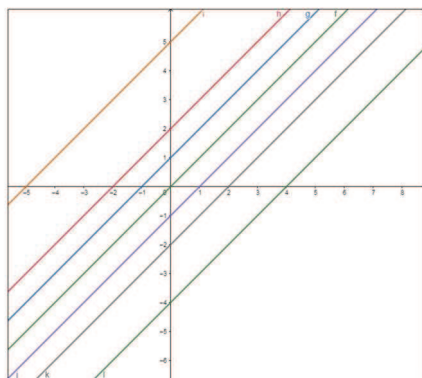
	f: $y = -x$
	g: $y = -2x$
	h: $y = -\frac{1}{2}x$
	i: $y = -4x$
	j: $y = -\frac{1}{4}x$



	f: $y = x$
	g: $y = -x$



Effect of y-intercept ( $c$ ):



	f: $y = x$
	g: $y = x + 1$
	h: $y = x + 2$
	i: $y = x + 5$
	j: $y = x - 1$
	k: $y = x - 2$
	l: $y = x - 4$

Write down the gradient and y-intercept of each graph:

1)  $y = 3x + 2$

5)  $y = 4x - 2$

9)  $4x + 2y = 3$

2)  $y = -5x + 3$

6)  $3y = 6x + 3$

10)  $y = x$

3)  $y = 5 - \frac{2}{3}x$

7)  $y = \frac{1}{2}x$

11)  $7y = 3x + 4$

4)  $y = x + 4$

8)  $y = 7x - \frac{2}{7}$

12)  $5y + 10x - 4 = 0$

Mark work. [1-4]

Mark work. [5-8]

Mark work. [9-12]